

FLOOR REPAIR

Floor Repair compound is a new concept for the repair of concrete and other flooring. floor repair is modified polyurethane concrete which has been specifically designed to provide an easy-to-use, primer free compound with exceptional physical properties.

TOUGH AND HARD WEARING

Floor Repair exhibits exceptional resistance to impact and abrasion.

COLD CURE APPLICATION

Unlike epoxy repair compounds Floor Repair will cure at low temperatures down to 0°C. The cure time is not affected by reduced temperatures in the same manner as epoxies and it is therefore ideal for the average building site repair.

SHOCK RESISTANT

Floor Repair, although exceptionally tough and hard wearing, has been designed to be slightly flexible to absorb shock. Floors repaired with Floor Repair withstand constant vibration from fork lift trucks.

EXCEPTIONAL ADHESION WITHOUT PRIMING

Sufficient resin is present in the compound to wet out the surrounding substrate and provide exceptional bonding.

EASY APPLICATION

Unlike epoxy repair compounds which are sticky and difficult to handle, Floor Repair has the same consistency as a cement based mortar and can easily be placed and trowelled to a closed finish.

CHEMICALLY RESISTANT

Floor Repair exhibits the highest order of resistance to a wide range of chemicals and may be used to effect repairs in chemical plants.

BONDS TO DAMP SURFACES

Floor Repair may be applied to damp but not wet surfaces without adverse effect on the bond strength.

RAPID SETTING

Floor Repair has been designed to set in 1 - 2 hours, minimising shut down times.

VERSATILITY

Floor Repair is a three pack product, two liquid components and a specially graded filler. Using all the filler gives a compound which does not slump and can be trowelled to a resin rich closed finish at any thickness down to a feather edge. Adding half of the filler gives a pourable compound which can be used to fill and grout small areas which may be difficult to trowel.

MIXING

Floor Repair is a three part polyurethane compound and should be mixed as follows:

1. Add all the contents of the container marked Part B to the contents of the container marked Part A and stir thoroughly until even consistency. Do not attempt to split units.
2. Pour the mixed liquid into the large plastic bucket provided and slowly add the filler Part C whilst stirring. Continue mixing until even consistency throughout is achieved.

For simple mixing use a mortar attachment on a slow speed electric drill.

Using all the filler Part C produces an easily trowellable mortar.

Using half the filler Part C produces a thinner, grout-like mortar which can be poured into smaller repairs.

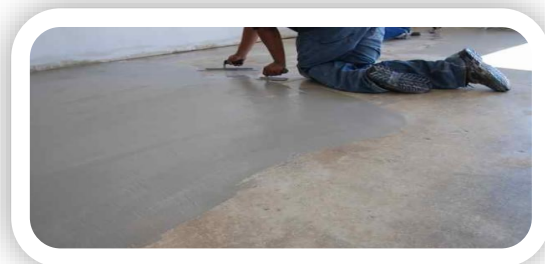
SURFACE PREPARATION

Surfaces to be repaired with Floor Repair should be clean and free from any loose materials, oil or contamination.

Floor Repair has a small percentage of water in the formulation and will tolerate application onto damp, but not wet surfaces.

APPLICATION

Floor Repair compound can be applied using metal or plastic trowels and floats.



Equine • Agricultural • Gym • Play

WWW.QUATTRO.ORG.UK