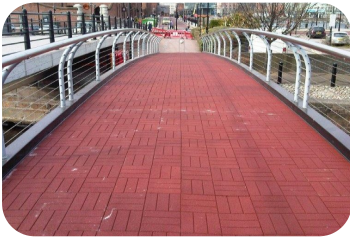


Brick Effect Tiles

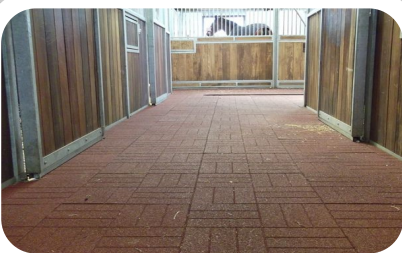
The Rubber & Resin Specialists



A high density conglomerated moulded rubber crumb tile. Due to it's slip resistance for horses is ideal for Equine Bridges, Stable Barn Passageways, Walkways and general areas of movement and activity. It is recommended Brick Effect Tiles are bonded.

Can also be used for domestic patios and balcony's offering a warm, safe, comfortable and aesthetically pleasing surface.

- **PATTERN:** BRICK EFFECT
- **SIZE:** 500mm x 500mm
- **THICKNESS:** 20mm, 30mm & 43mm
- **COLOURS:** BLACK, RED & GREEN



Equestrian • Agricultural • Gym • Play

Quattro Products Limited, Milestone House Ind Est, Penrith, Cumbria, CA11 9NQ

Tel: 01768864977 Email: enq@quattro.org.uk Web: www.quattro.org.uk



Data Sheet

The Rubber & Resin Specialists

Material Compound:	Recycled rubber bounded by Polyurethane
Approximate Dimensions:	500mm x 500mm x 20mm, 30mm or 43mm
Colours:	Black, Red & Green
Tolerance:	+/- 1.5%
Density:	900kg/m ³
Tensile Strength:	1.20 N/mm ² following DIN EN ISO 1798
Slip Resistance:	B.S. 7188 (RECOMMENDED MINIMUM VALUE OF 40) DRY 63-68 WET 52-56
Long term thermal stability:	- 40°C ... +80°C
Short term thermal stability:	Up to +110°C
Fire Classification:	Elf, E (according to EN 13501-1:2003)
Compressive load capacity:	Over 4N/mm ² (according to DIN 53454)
Modulus of elasticity:	2.88 + 0.12 N/mm ² (according to DIN 53454)
Dynamic modulus of elasticity:	1.2...6.5 N/mm ² in the load area
Linear expansion factor:	(144...157). 10 ⁻⁶ K ⁻¹ (according to DIN 53752)
Thermal conductivity:	0.177...0.199 W.K ⁻¹ .m ⁻¹ at 20 ... 60°C
Dimension deviation:	Max. 1.5% - depending on temperature changes
Colour stability:	Colour may fade out with UV exposure over time
Water absorption capacity:	Max 20%
Chemical resistance:	Resistance to weak acids and lyes conditionally resistant
Impact sound measurement of improvement:	26db (according to DIN 52210, section 3)
Weight per m ² :	20mm @ 37.12kg 30mm @ 55.68kg 43mm @ 79.8kg
Pieces per m ² :	4