

Beast Mats

The Rubber & Resin Specialists



The Beast Mat is Quattro's very high density mat.

Suitable for very heavy wear in Milking Parlours, Collecting Yards, Feed Passages & Slats.

At Quattro we offer a bespoke on site slat fitting service.

- 6MPA Heavy Duty Rubber Mat
- Thickness: 24mm
- Two Sizes:
- 2m x 1.2m Straight Edge with Saw Tooth Base
- 1.6m x 1.1m Interlocking with Open Draining Base
- Anti-slip surface medium profile tyre tread pattern.
- Imitates the natural ground
- Increased resistance and abrasion resistance
- Fast and easy to fit between Milking
- Bespoke fitting service for Slats



Equestrian • Agricultural • Gym • Play

Quattro Products Limited, Milestone House Ind Est, Penrith, Cumbria, CA11 9NQ

Tel: 01768864977 Email: enq@quattro.org.uk Web: www.quattro.org.uk



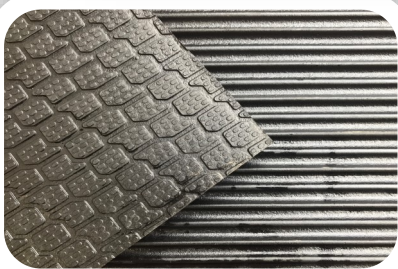
Beast Mats

The Rubber & Resin Specialists

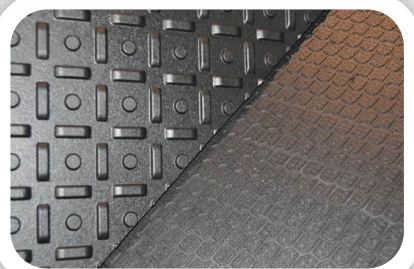
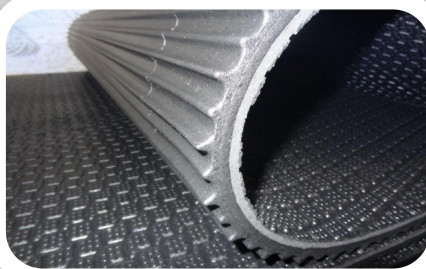
Certain applications require a product that is much stronger than normal options, "The Beast" has been manufactured to a much higher density and strength to provide long term wear in extreme high wear situations for example cow standings, feed passages & over slats.

At 25mm thick the product delivers strength and durability that cannot be matched.

The unique surface texture provides excellent grip even in wet and dirty conditions and they are larger than standard rubber mats allowing them to bridge 2metre wide walkways which mean less cutting and less waste.



2m x 1.2m Saw Tooth Base



1.6m x 1.1m Open Draining Base

Equestrian • Agricultural • Gym • Play

Quattro Products Limited, Milestone House Ind Est, Penrith, Cumbria, CA11 9NQ

Tel: 01768864977 Email: enq@quattro.org.uk Web: www.quattro.org.uk

