

QUATTRO®

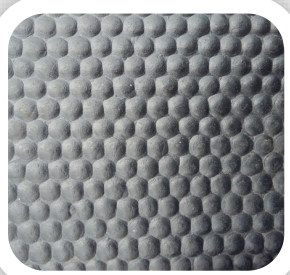
Bonded & Sealed Stable Matting

The Rubber & Resin Specialists



Quattro developed the Bonded & Sealed matting system over 20 years ago to alleviate the problem of urine, bedding and dirt getting under loose fitted mats which can make stables unhygienic and cause strong odours plus lifting mats in and out of stables to clean underneath is extremely difficult.

The Bonded & Sealed Matting can be fitted in to Stables, Wash Boxes, Treadmills, Turn Out Pens & Walkways
Quattro have a range of mats below that can be used for different areas and situations.



18mm or 22mm Supermats

Our most popular low profile mat for use in stables and where grip isn't a priority.



18mm Quattromat

High profile mat for stables and areas where grip is required. Easy to sweep even with the higher profile.



22mm Diamond Mats

Heavy duty grip mat for wash boxes, walkways, turn out pens and treadmill surrounds



25mm Comfort Mat

Top of the range mat that provides extra comfort and durability with a low profile for use in stables.

The stable mats we use are a minimum of 4Mpa tensile strength. The higher the tensile strength the better the quality of the mats. The majority of stable mats are 3Mpa or less and will spread and wear quickly if used for bonding and sealing. The use of our higher density mats ensures the floors will stay hygienic and durable for a good number of years.

Equestrian • Agricultural • Gym • Play

Quattro Products Limited, Milestone House Ind Est, Penrith, Cumbria, CA11 9NQ

Tel: 01768864977 Email: enq@quattro.org.uk Web: www.quattro.org.uk



Bonded & Sealed Stable Matting

The Rubber & Resin Specialists



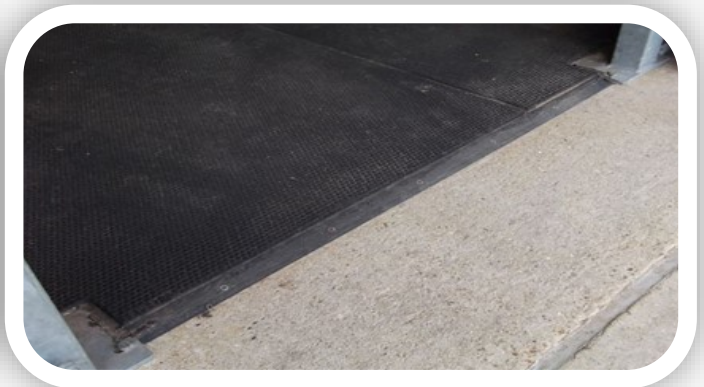
Quattro's range of high density mats can be bonded to new and existing floors using our Matbond urethane resin. The resin expands as it cures to take a hold of the grooves and joints in the mats from underneath.



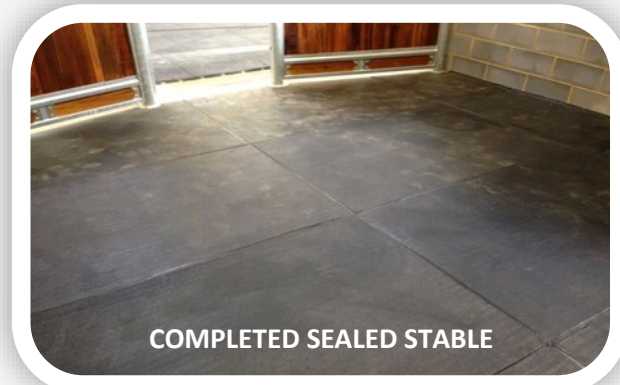
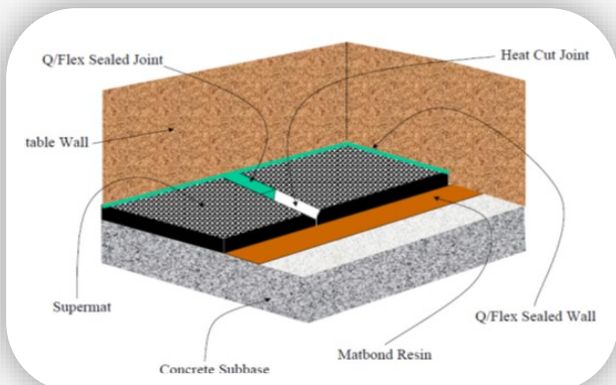
Once the mats are in place the joints between the mats are cut out using a heated rubber groover. The cut strip is then removed to leave a clean open groove.



The joints are then sealed using our Q/Flex Gun applied flexible urethane resin as well as the perimeter of the area. Any residual sealant left on the surface of the mats will be removed with use.



Heavy duty plastic doorway strips are fitted in to doorways or along drains to protect the edge of the mats if no thresholds in place.



Equestrian • Agricultural • Gym • Play

Quattro Products Limited, Milestone House Ind Est, Penrith, Cumbria, CA11 9NQ

Tel: 01768864977 Email: enq@quattro.org.uk Web: www.quattro.org.uk



Bonded & Sealed Instructions

QUATTRO®

The Rubber & Resin Specialists

APPLICATION INSTRUCTION FOR FITTING OF THE BONDED AND SEALED STABLE MATTING KIT

FLOOR TO BE GOOD AND FLAT AND NOT HEAVILY TAMPED OR MATS WON'T BOND

ENSURE AREA TO BE FITTED IS CLEAN AND DRY, SWEEP OR VACUUM UP EXCESS DUST. IF VERY DUSTY PRIME WITH Q SEAL P1.

CUT MATS IN LOOSE TO THE FULL STABLE. IT IS BETTER TO START IN THE DOORWAY SO THAT ANY SMALLER CUTS ARE AT THE BACK OF THE STABLE. A SHARP STANLEY KNIFE IS THE BEST TOOL FOR CUTTING THE MATS.

ONCE ALL MATS HAVE BEEN CUT IN LOOSE, PEEL BACK THE MATS AT THE BACK OF THE STABLE TO ALLOW FOR BONDING.

TWIN PACK SUPERFLEX MEMBRANE ADHESIVE.

MIX RESIN AND HARDENER THOROUGHLY AND SPREAD TIGHTLY WITH A FINE SERRATED TROWEL OR LIGHTLY WITH THE FLAT EDGE OF A METAL FLOAT. LAY MATS BACK IN PLACE ONTO THE WET SUPERFLEX MEMBRANE.

IF NO JOINT CUTTER IS AVAILABLE APPLY A BEAD OF Q/FLEX ALONG OPEN SIDES OF MATS BEFORE PUTTING THE NEXT MAT INTO PLACE. CARRY ON UNTIL ALL THE MATS ARE IN PLACE ENSURING THAT THEY ARE PUSHED UP TIGHT.

Q/FLEX SEALER LEFT ON THE TOP OF THE MATS WILL PEEL AWAY WHEN THE AREA IS PUT INTO USE.

USE THE Q/FLEX AROUND THE PERIMETER TO SEAL THE EDGE.

DOORWAY STRIPS ARE AVAILABLE TO FINISH ACROSS OPEN EDGES. THESE ARE SET ONTO Q/FLEX AND DRILLED AND FIXED DOWN WITH DRIVE SCREWS.



Equestrian • Agricultural • Gym • Play

Quattro Products Limited, Milestone House Ind Est, Penrith, Cumbria, CA11 9NQ

Tel: 01768864977 Email: enq@quattro.org.uk Web: www.quattro.org.uk

