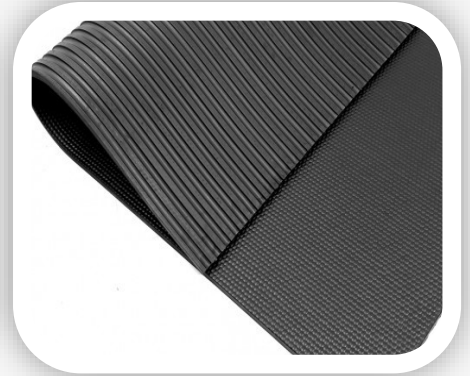




The Rubber & Resin Specialists

EQUINE, AGRICULTURAL, LEISURE, PLAY & COMMERCIAL RUBBER MATTING & RESINS



Rubber Matting & Resin
Catalogue Price List
August 2021



All prices are plus VAT and Delivery

Quattro Products Limited, Milestone House Ind Est, Penrith, Cumbria, CA11 9NQ

Tel: 01768864977 Email: enq@quattorubberandresin.co.uk Web: www.quattorubberandresin.co.uk



The Rubber & Resin Specialists

Over the last 30 years Quattro have built up an excellent reputation as the UK's leading supplier and fitters of High Quality rubber matting. As we import most of our products in large quantities we can offer a very competitive price to our customers.

Our main market is Equine and Agricultural. Safety, hygiene & animal welfare are our main priority as the majority of our mats are made for comfort & slip resistance.

You will notice in our price list that Mpa is mentioned a lot next to our rubber matting. This is the Tensile Strength of the rubber. The Tensile Strength is the force required to cause the rupture of a rubber material and is expressed in Megapascals (Mpa). Solid rubber with a higher Mpa reading indicates a better quality of material.

Most stable mats in the UK are 2.5 to 3Mpa whereas Quattro's are up to 5Mpa

We also offer rubber products for gyms, play areas and factories with our products fitted we can guarantee a practical, hard wearing, safe and attractive surface.

We are continually expanding our range of products therefore we are able to offer the best products for our customers needs.

We also have 'In House Fitters' that fit our rubber products nationwide.

CONTENTS INDEX:

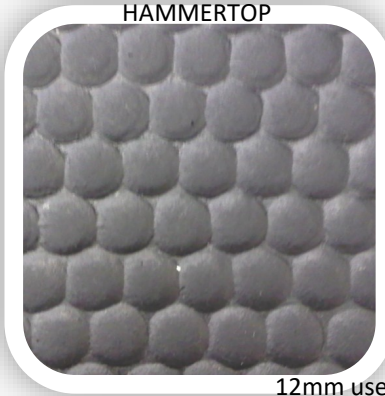
1. Stable Mats - Parlour Mats - Silage Pit Mats - Gym Mats
 2. Parlour Mats - Cubicle Mats - Gym Mats
 3. Eva Mats & Capping - Cow Mattresses - Parlour Pit Tiles - Play Tiles
 4. Hollow Mats - Utility Mats - Silage Pit Mats - Dog Bone Pavers - Brick Effect Tiles
 5. Rubber Rolls - Ramp Matting - Horsebox Ramp Mats - Chevron Roll - Walker Wall Roll
 6. Sportsroll - Acoustic Roll - Interlocking Puzzle Tile - Gym Tile
 7. Turf Tile - PVC Doorway Strips - Plastic Wall & Ceiling Boards
 8. Silage Pit Coatings & Concrete Repair Materials
 9. Roof Coatings & Repair
 10. Resin Floor & Wall Coatings/Screeds
 11. Rubber Adhesives - Resin Binders - Sealants
 12. Rubber & Stone Kits
 13. Aggregates - Rubber Granules - Stone - Ancillaries
- Back Page. Delivery Information

S/E = Straight Edge INT = Interlocking Edge

HAMMERTOP & AMOEBIC MAT

3Mpa Standard density solid rubber mats for Stables, Gyms and Young Stock in 17mm. 12mm can be used for Transport & Silage Mats.

| Thickness | Dimensions | QR Cost |
|-----------|-------------|---------|
| 12mm | 1.8m x 1.2m | £31.00 |
| 17mm | 1.8m x 1.2m | £38.00 |



12mm used as Silage Pit Mats

SUPERMAT (4Mpa)

Quattro's Superior High Density Solid rubber mat for Stables, Walkways and Gyms. Used with our Bonded & Sealed Mat System.

| Thickness | Dimensions | QR Cost |
|-----------|-------------|---------|
| 18mm | 1.8m x 1.2m | £42.00 |
| 22mm | 1.8m x 1.2m | £49.00 |



QUATTROMAT (4Mpa)

Very High Density Solid rubber mat for Stables, Washbays, Walkways and Young Stock plus a very good lower cost option for Parlour floors. Used with our Bonded & Sealed Mat System

| Thickness | Dimensions | QR Cost |
|-----------|-------------|---------|
| 18mm | 1.8m x 1.2m | £42.00 |



DIAMOND MAT (5Mpa)

Very Heavy Duty Grip Mat for Stables, Washbays & Walkways. Can also be used for Milking Parlour floors. Used with our Bonded & Sealed Mat System

| Thickness | Dimensions | QR Cost |
|-----------|-------------|---------|
| 22mm S/E | 1.8m x 1.2m | £53.00 |



THE DIAMOND BEAST MAT (8Mpa) INTERLOCKING 6'x4'

Extremely high density interlocking rubber mat for Parlour Floors, Collecting Yards, Slats and Feed Passages. Also can be used in high wear Equine areas & Stocks.

| Thickness | Dimensions | QR Cost |
|-----------|-------------|---------|
| 22mm | 1.8m x 1.2m | £59.00 |



RUBBER COMFORT MAT (4Mpa) STRAIGHT EDGE 6'x4'

Cushioned rubber mat for Cow Cubicles and Stables.

Used with our Bonded & Sealed Mat System

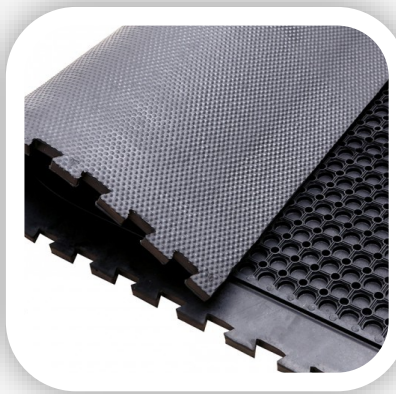
| Thickness | Dimensions | QR Cost |
|-----------|-------------|---------|
| 25mm | 1.8m x 1.2m | £49.00 |



RUBBER COMFORT MAT (4Mpa) INTERLOCKING 6'x3'9"

Cushioned interlocking rubber mat for Cow Cubicles. Straight edged 1.15m wide available upon request at same cost.

| Thickness | Dimensions | QR Cost |
|-----------|--------------|---------|
| 25mm | 1.8m x 1.14m | £49.00 |

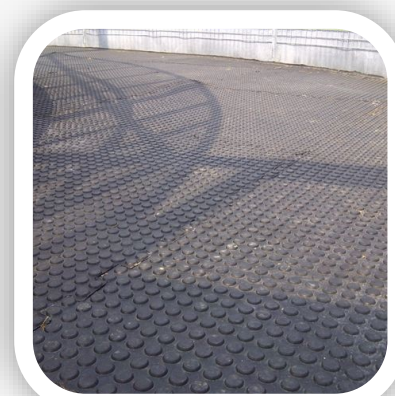


GRIP TOP TILE (5Mpa & 6Mpa)

Very High Density Interlocking rubber grip tile for Horse walkers, Stables, Walkways, Milking Parlours & Gyms

5Mpa Grip Pattern on one side and flat on the other and 6Mpa Grip Pattern on both sides

| MPA | Thickness | Dimensions | QR Cost |
|------|-----------|------------|---------|
| 5Mpa | 18mm | 1m x 1m | £31.00 |
| 6Mpa | 18mm | 1m x 1m | £33.00 |

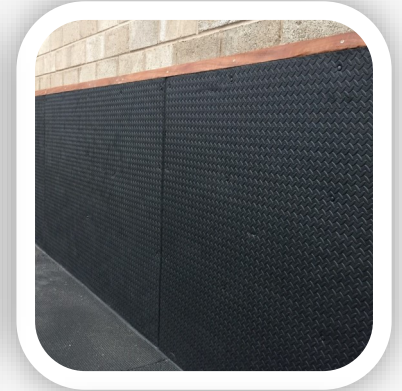


The Rubber & Resin Specialists

QUATTROSOFT EVA MAT

Lightweight soft Eva mat for Stable Walls

| Thickness | Dimensions | QR Cost |
|------------------|-------------------------|---------|
| 10mm | 1.8m x 1.2m | £22.00 |
| 25mm | 1.8m x 1.2m | £35.00 |
| 35mm | 1.8m x 1.2m | £41.00 |
| 45mm | 1.8m x 1.2m | £48.00 |
| Hardwood Capping | 2m Lengths x 25mm Thick | £18.00 |



QUATTROSOFT EVA MAT HD

High density rubber blend version of the above for Cow Cubicles and Stable Floors

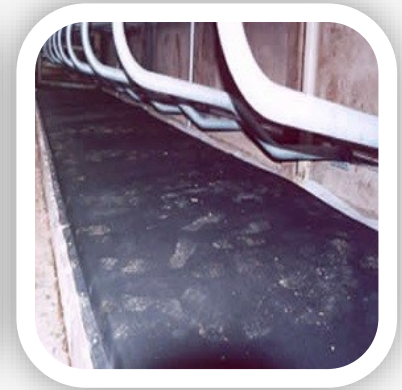
| Thickness | Dimensions | QR Cost |
|-----------|-------------|---------|
| 24mm | 1.8m x 1.2m | POA |



LUXURY COW MATTRESS

Waterproof, durable seamless Cow Mattress. Includes Foams, Rubber Insertion Cover, Fixings & Rubber/Plastic Fixing Strips.

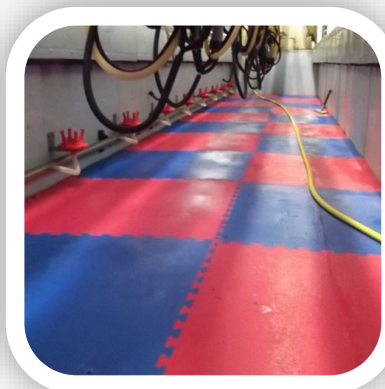
| Thickness | Dimensions | QR Cost |
|----------------|------------|--------------|
| 35mm | 1.7m wide | £82.00 In mt |
| 4mm Cover Only | 2m wide | £45.00 In mt |
| Poly Pillow | 1.22m | £25.00 |



PARLOURSOFT/PLAYSOFT TILES

Interlocking 1m² Eva Tiles for comfort and safety under foot in Parlour Pits and Children's Play Areas and Gyms

| Thickness | Dimensions | QR Cost |
|-----------|------------|---------|
| 20mm | 1m x 1m | £19.00 |
| 30mm | 1m x 1m | £23.00 |
| 40mm | 1m x 1m | £27.00 |



20mm & 40mm Blue/Red



30mm Green/Grey

The Rubber & Resin Specialists

HOLLOW MATS - SILAGE PIT MATS

Ideal for Silage and Maize Pits. Environmentally friendly alternative to tyres. Weight = 13kg
Hollow ring mat for use in Gateways and Children's Play Areas. Pegs & Ties available.

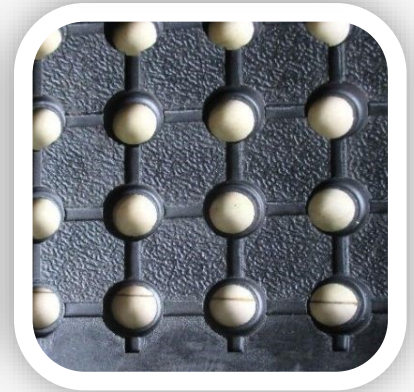
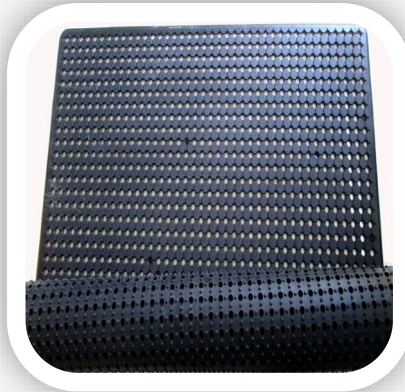
| Thickness | Dimensions | QR Cost |
|-----------|-----------------|---------|
| 22mm | 1.5m x 1m | £22.00 |
| 150mm | PVC Anchor Pegs | £0.10 |



UTILITY MATS - SILAGE PIT MATS

Ideal for Silage and Maize Pits. Environmentally friendly alternative to tyres. Weight = 18kg
Also designed as Anti-Fatigue, Anti-Slip Workstation Mats with bevelled edges.

| Thickness | Dimensions | QR Cost |
|-----------|-------------|---------|
| 11mm | 1.8m x 1.2m | £26.00 |



DOG BONE RUBBER PAVERS

High density rubber pavers for Horsewalkers, Walkways, Stable Yards and Racecourses.
35 N^o per m². Size per paver 200mm x 165mm

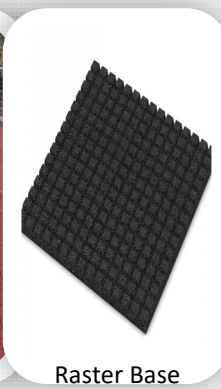
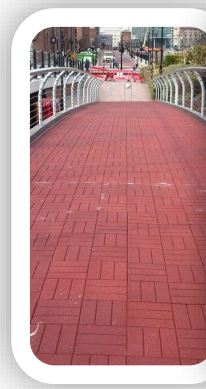
| Thickness | Colour | QR Cost |
|-----------|--------|----------------------|
| 43mm | Black | £45.00m ² |
| 43mm | Red | £46.00m ² |
| 43mm | Green | £48.00m ² |



HORSE TILES - Black & Red

High density rubber horse tile for use on Walkways, Stable Barn Passages and Equine Bridges.
20mm Solid Base & 40mm with 15mm Raster Base
Plain Top or Brick Effect

| Thickness | Dimensions | QR Cost |
|-----------|---------------|----------------------|
| 20mm | 500mm x 500mm | £33.00m ² |
| 40mm | 500mm x 500mm | £45.00m ² |



Raster Base



HEAVY DUTY RUBBER ROLLS

Hard wearing rubber in a roll for Walkways and Transport. Part rolls available.

NR = Nylon Reinforcing through centre

| Thickness | Dimensions | QR Cost |
|-----------|------------|-------------------|
| 6mm | 10m x 1.8m | £380.00 |
| 10mm | 11m x 2m | £760.00 |
| 10mm NR | 20m x 2.4m | £95.00 per ln mt |
| 15mm NR | 20m x 2.4m | £105.00 per ln mt |



GRIP TOP RAMP MATTING

Heavy duty reinforced textured ramp matting for Lorry and Trailer ramps. Cut to length required.

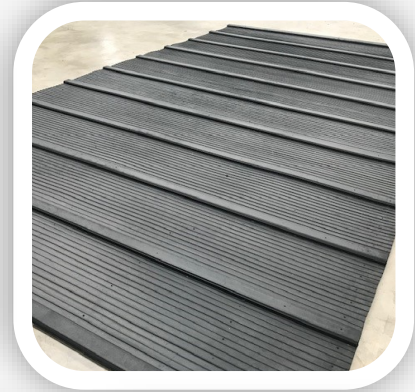
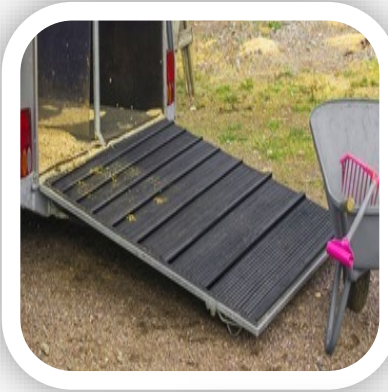
| Thickness | Dimensions | QR Cost |
|-----------|------------|------------------|
| 5mm | 1.2m wide | £37.00 per ln mt |
| 5mm | 1.5m wide | £46.00 per ln mt |



RUBBER TRAILER RAMP MATS

Solid rubber 17mm ramp mat with grip lines and raised 10mm cleats for Lorry and Trailer ramps.

| Thickness | Dimensions | QR Cost |
|-----------|--------------|---------|
| 17mm | 2.1m x 1.22m | £46.00 |



Chevron Roll & Walker Wall Roll

Chevron Roll is used for ramps in equine pools and on yards for equine and agricultural use. 8mm thick with 6mm cleats.

Walker Wall Roll is a 10mm thick smooth finish, reinforced heavy duty rubber roll for fitting to Horse Walker walls.

| Product | Thickness | Dimensions | QR Cost |
|------------------|-----------|------------|------------------|
| Chevron Roll | 10mm | 1.8m Wide | £90.00 per ln mt |
| Walker Wall Roll | 10mm | 1.2m Wide | £49.00 per ln mt |



Alternative widths & thicknesses available - Price upon request

Chevron Roll

Walker Wall Roll

SPORTS ROLL

Durable & attractive rubber in a roll for Gyms, Stable Barn Passageways, Stable Walls & Vets. Available in standard colours of Black with 20% Red, Green, Blue, Grey/White Fleck or Black Only .

| Thickness | Dimensions | Colour | QR Cost |
|-----------|-------------|------------|---------|
| 4mm | 10m x 1.25m | 20% Colour | £152.00 |
| 6mm | 10m x 1.25m | Black | £230.00 |
| 10mm | 10m x 1.25m | Black | £270.00 |
| 6mm | 10m x 1.25m | 20% Colour | £259.00 |
| 10mm | 10m x 1.25m | 20% Colour | £370.00 |



ACOUSTIC ROLL - BLACK

Acoustic and vibration reducing rubber underlay

| Thickness | Dimensions | QR Cost |
|-----------|-------------|---------|
| 6mm | 10m x 1.25m | £115.00 |
| 10mm | 6m x 1.25m | £116.00 |
| 15mm | 6m x 1.25m | £160.00 |



INTERLOCKING SPORTS TILE

Interlocking rubber tile - black with coloured fleck surface for Gyms, Ice Rinks, Dog Exercise Areas and Stable Barn Walkways etc. Can be bonded to subbase.

Standard Colour - Grey Fleck

Blue, Red & Green Fleck available to order

| Thickness | Dimensions | QR Cost |
|-----------|------------|---------|
| 10mm | 1m x 1m | £33.00 |



INTERLOCKING GYM TILE

Low cost interlocking heavy duty Gym Tile. Can be used for all Gym activities apart from heavy weights.

| Thickness | Dimensions | QR Cost |
|-----------|---------------|---------|
| 16mm | 0.91m x 0.91m | POA |



TURF TILE

Soft Interlocking Artificial Grass and Eva Tile for Plays Areas, Gardens and Trade Stands

Drain through for use in gardens.

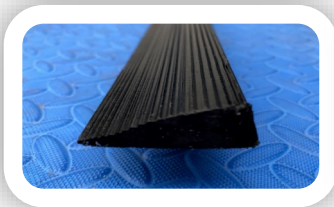
| Thickness | Dimensions | QR Cost |
|-----------|------------|---------|
| 18mm | 1m x 1m | POA |



DOORWAY/EDGING STRIPS

PVC Strips for finishing in doorways and along drains

| Product | Dimensions | QR Cost |
|--------------------------|-------------|---------|
| 15mm Doorway Strips Tri | 2.4m | £14.00 |
| 10mm Doorway Strips Flat | 2.4m x 23mm | £13.00 |



STOKBOARD

Recycled plastic board with embossed surface for Stable and Animal Enclosure Walls/Gates

| Thickness | Dimensions | QR Cost |
|-----------|-------------|---------|
| 6mm | 2.4m x 1.2m | £44.00 |
| 9mm | 2.4m x 1.2m | £53.00 |
| 12mm | 2.4m x 1.2m | £71.00 |



QUATTRO WALL & CEILING BOARDS

Polypropylene wall boards (blue/white) & PVC tongue & groove ceiling boards (white) for Parlours and Dairies.

| Product | Dimensions | QR Cost |
|-----------------------|-------------|---------|
| 3mm Quattroboard | 2.4m x 1.2m | £45.00 |
| Division Bars | 2.4m | £10.50 |
| Capping Strips | 2.4m | £10.50 |
| Inside Corners | 2.4m | £10.00 |
| Outside Corners | 2.4m | £10.00 |
| Metal Outside Corners | 2.4m | £41.00 |
| 100 x Plastic Rivets | 25mm | £15.50 |
| 100x Plastic Rivets | 45mm | £33.00 |
| Ceiling Boards | 3m x 250mm | £25.00 |
| Ceiling Boards | 5m x 250mm | £41.00 |
| Edge Trim | 5m | £12.00 |
| Division Bar | 5m | £13.00 |

POLY PILLOW

Recycled ¼ inch thick plastic with tongue and groove

| Length | Weight | QR Cost |
|--------|--------|---------|
| 1.22m | 3.2kg | £25.00 |

The Rubber & Resin Specialists

SILAGE PIT COATINGS - REPAIR MATERIALS - CONCRETE REPAIR

QPOL SA

Styrene Acrylate additive for cementitious mixes that provides a very strong surface for repairing silage pit floors, walls and in yards.

| Size | Coverage | QT Cost |
|------|----------|---------|
| 5L | N/A | £26.00 |
| 10L | N/A | £44.00 |
| 20L | N/A | £85.00 |

QSEAL P1

Chemical Resistant clear/brown resin for silage pit walls and concrete surfaces. Can be applied by roller or airless spray

| Size | Coverage | QT Cost |
|------|-------------------|---------|
| 5L | 40m ² | £49.00 |
| 25L | 200m ² | £210.00 |

QSEAL P2

Chemical resistant high solids clear coating for sealing concrete floors and walls. Higher viscosity than Q/Seal P1

| Size | Coverage | QT Cost |
|------|------------------|---------|
| 5L | 40m ² | £79.00 |

HYTECT

High strength twin pack flexible chemical resistant coating for silage pits. Colour Black. Roller & Brush applied

| Size | Coverage | QT Cost |
|------|------------------|---------|
| 5kg | 10m ² | £65.00 |

NITOSEAL GREY

High strength gun applied flexible joint sealant for silage pit floors and walls.

| Size | Coverage | QT Cost |
|---------------|---------------------------------|---------|
| 600ml Sausage | 10mm x 10mm Joint = 6 ln mts | £10.00 |
| Box of 10 | | £91.00 |

EXPAND P or V

Twin pack flexible Pourable or Viscous resin for floor joints.

| Size | Coverage | QT Cost |
|------|----------------------------------|---------|
| 5kg | 10mm x 10mm Joint = 50 ln mts | £75.00 |

SPEEDSCREED HD

Heavy duty rapid setting concrete floor repair material for Milking Parlours, Dairies, Yards & Factories.

| Size | Coverage | QT Cost |
|------|-------------------------|---------|
| 25kg | 2.5m ² @ 5mm | £40.00 |

CEMENTONE RAPID SET SCREED

Easy to use rapid setting concrete repair. Can be feather edged. 1 hour cure.

| Size | Coverage | QT Cost |
|------|-----------------------|---------|
| 10kg | 1m ² @ 5mm | £11.00 |

TROUGH RESURFACER

Extra strong cementitious self levelling screed for resurfacing concrete troughs and feed passages.

| Size | Coverage | QT Cost |
|------|--------------------------|---------|
| 12kg | 1.25m ² @ 5mm | £19.00 |
| 24kg | 2.5m ² @ 5mm | £35.00 |

FLOOR REPAIR

PU resin floor repair material that can be feather edged.

| Size | Coverage | QT Cost |
|------|-----------------------|---------|
| 10kg | 1m ² @ 5mm | £45.00 |

FLOOR REPAIR COLOURED

Coloured version of above. Minimum order quantity = 20.

| Size | Coverage | QT Cost |
|------|-----------------------|---------|
| 10kg | 1m ² @ 5mm | £52.00 |

ROOF COATINGS AND REPAIR

Q/ROOF - Light Grey

The ultimate roof coating. High performance flexible polyurethane roof membrane coating. 2 coats required.

| Size | Coverage | QT Cost |
|------|---------------------------|---------|
| 25L | 25m ² per coat | £230.00 |

AQUATECT S - Black

Top class thixotropic bitumen roof coating. 2 coats required.

Can also be used as a damp proof membrane under concrete or as a tanking membrane.

| Size | Coverage | QT Cost |
|------|---------------------------|---------|
| 5L | 10m ² per coat | £40.00 |
| 25L | 50m ² per coat | £120.00 |

AQUATANK - Black

Thinner, easier to apply high bitumen content roof or tank coating. Provides an effective waterproof, weatherproof, corrosive resistant coating for steelwork, concrete and slurry tanks. 2 coats required.

| Size | Coverage | QT Cost |
|------|----------------------------|---------|
| 5L | 40m ² per coat | £30.00 |
| 25L | 200m ² per coat | £100.00 |

ALUTECT - Aluminium

Thixotropic aluminium reflective roof coating. Imparts excellent durability and protection against UV degradation and weathering to the roof. 2 coats required.

| Size | Coverage | QT Cost |
|------|---------------------------|---------|
| 25L | 50m ² per coat | £150.00 |

QROOF TAPE

For sealing over holes and cracks on all roof substrates.

| Size | QT Cost |
|--------------|---------|
| 100mm x 7.5m | £62.00 |
| 100mm x 15m | £92.00 |
| 150mm x 7.5m | £98.00 |
| 150mm x 15m | £140.00 |



AQUAFIL - Black

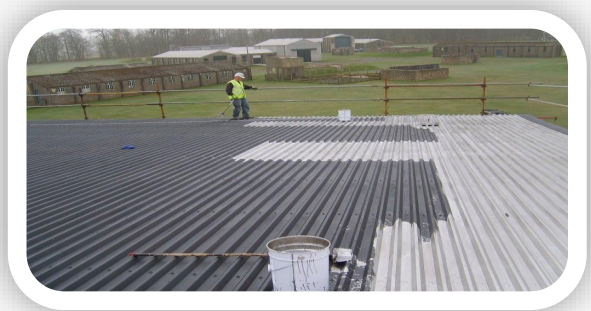
Thixotropic trowel grade gap/crack filler for roofs/gutters. Easy to apply by trowel.

| Size | Coverage | QT Cost |
|------|----------|---------|
| 5L | N/A | £29.00 |

Q/SOLVE

Solvent cleaner for use on application tools.

| Size | QT Cost |
|------|---------|
| 1L | £13.00 |
| 5L | £44.00 |



The Rubber & Resin Specialists

WALL & FLOOR RESINS

Q/TYLE GLOSS

Chemical & UV resistant wall coating

| Size | Coverage | QT Cost |
|-------|------------------|---------|
| 2.5kg | 15m ² | £65.00 |

Q/TYLE PARLOUR PACK

3 coat pack for Parlours & Dairy Walls. Pack Includes:
1 x 2.5kg Primer & 2 x 2.5kg Q/Tyle Gloss

| Size | Coverage | QT Cost |
|-------|------------------|---------|
| 7.5kg | 15m ² | £155.00 |

Q/TYLE DD1 CLEAR

Single Pack Clear Chemical & UV resistant wall coating.

| Size | Coverage | QT Cost |
|------|------------------|---------|
| 2.5L | 25m ² | £75.00 |
| 5L | 50m ² | £120.00 |

ELASTECT

Single Pack Elastomeric Co Polymer Emulsion wall coating
for Internal & External Walls.

| Size | Coverage | QT Cost |
|------|------------------|---------|
| 10kg | 40m ² | £110.00 |

RESIN SCREEDS & SELF LEVELLERS

| Material | Size | Coverage | QT Cost |
|-------------|---------|----------------------------|---------|
| Q/Prime TC | 2.5kg | 10m ² | £38.00 |
| Q/Prime DPM | 5kg | 20m ² - 2 coats | £95.00 |
| Q/Grip HD | 28.66kg | 5m ² @ 2mm | £110.00 |
| Q/Level | 31kg | 6m ² @ 2mm | £150.00 |
| Q/Crete RT | 30.3kg | 2.5m ² @ 6mm | £64.00 |
| Q/Crete HF | 29.64kg | 2.4m ² @ 6mm | £63.00 |
| Q/Crete CG | 16.3kg | 4.5m @ 100mm | £30.00 |
| Q/Crete TF | 3.2kg | 5m ² | £23.00 |

COVERTECT PC GLOSS COLOURED

Easy to apply PU Floor coating. 2-3 coats.

| Size | Coverage | QT Cost |
|------|------------------|---------|
| 5kg | 40m ² | £65.00 |

Q/SHIELD SF COLOURED

Medium build solvent free epoxy floor coating—2 coats.

| Size | Coverage | QT Cost |
|-------|------------------|---------|
| 2.5kg | 12m ² | £39.00 |
| 5kg | 24m ² | £69.00 |

Q/TECT COLOURED

High build coloured epoxy floor coating—2 coats.

| Size | Coverage | QT Cost |
|-------|------------------|---------|
| 2.5kg | 10m ² | £41.00 |
| 5kg | 20m ² | £73.00 |

Q/TECT CLEAR

Clear epoxy floor coating.

| Size | Coverage | QT Cost |
|-------|------------------|---------|
| 2.5kg | 10m ² | £52.00 |
| 5kg | 20m ² | £92.00 |

Q/DECK COLOURED

High build flexible PU floor coating—2 coats.

| Size | Coverage | QT Cost |
|-------|------------------|---------|
| 2.5kg | 10m ² | £43.00 |
| 5kg | 20m ² | £73.00 |

Q/FLEX 500 UVR COLOURED

UV Resistant high build flexible PU coating. 2 coats

| Size | Coverage | QT Cost |
|------|------------------|---------|
| 4kg | 15m ² | £79.00 |

RUBBER ADHESIVES - BINDERS - SEALANTS

MATBOND

Flexible single pack adhesive for bonding rubber pavers & tiles Coverage 2m² per kg dependant on substrate. Superflex Membrane is now recommended for bonding mats.

| Size | Coverage | QT Cost |
|--------|------------------|---------|
| 5kg | 10m ² | £55.00 |
| 10kg | 20m ² | £89.00 |
| 22.5kg | 45m ² | £182.00 |

QFLEX JOINT SEALANT

Gun applied polyurethane joint sealant for sealing joints in between mats.

| Size | Coverage | QT Cost |
|-----------|-----------------------------------|---------|
| 310ml | 10mm x 10mm Joint = 3.1 ln mts | £9.00 |
| 600ml | 10mm x 10mm Joint = 6 ln mts | £9.00 |
| Box of 12 | - | £95.00 |

QFLEX HYBRID

Gun applied joint sealant and adhesive for mats. Can be used on damp surfaces

| Size | Coverage | QT Cost |
|---------------|---------------------------------|---------|
| 600ml Sausage | 10mm x 10mm Joint = 6 ln mts | £11.00 |
| Box of 12 | | £120.00 |

FLEXCREED HT BINDER

Flexible high tensile resin binder for the Flexscreed system.

| Size | Coverage | QT Cost |
|-------|-----------------|-----------|
| 5kg | 2m ² | £60.00 |
| 25kg | per 6kg | £210.00 |
| 220kg | at 20mm | £1,600.00 |

SUPERFLEX MEMBRANE MAT ADHESIVE

Twin pack thixotropic rubber adhesive for mats and rubber rolls plus final sealer for Flexscreed Sealed System.

| Size | Coverage | QT Cost |
|------|--------------------|---------|
| 5kg | 4.5m ² | £44.00 |
| 10kg | 9m ² | £67.00 |
| 15kg | 13.5m ² | £90.00 |

FLEXISTRENGTH

Twin pack rubber adhesive for bonding rubber rolls.

| Size | Coverage | QT Cost |
|------|------------------|---------|
| 10kg | 14m ² | £74.00 |

FLOOD COAT

1st seal coat for Flexscreed. Trowel applied

| Size | Coverage | QT Cost |
|------|-----------------|---------|
| 10kg | 7m ² | £69.00 |

FLEXSCREED GALAXY UVR BINDER

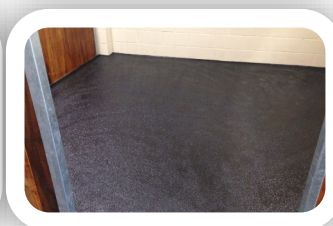
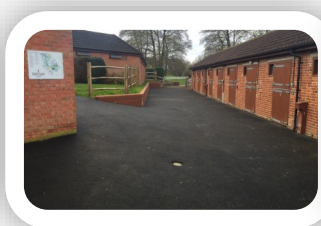
Twin Pack UV Resistant binder for Resin Bound Stone.

| Size | Coverage | QT Cost |
|-------|------------------------|---------|
| 6.5kg | 3m ² @ 18mm | £75.00 |

Q/SOLVE SMOOTHING AGENT

Solvent cleaner for use on application tools. No smell.

| Size | QT Cost |
|------|---------|
| 5L | £45.00 |
| 25L | £190.00 |



RUBBER & STONE KITS

FLEXSCREED KITS

Flexscreed rubber screed kits for internal areas such as Stables and external areas such as Yards. Coverage 3m² per kit

The Repair Kit is a resin rich mix for repair of damaged areas

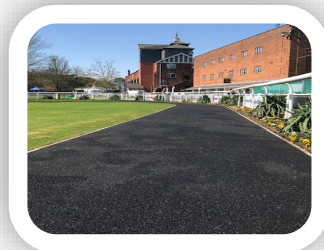
Internal: 5 x 5kg Superflex Membrane + 25kg Rubber Granules

External: 4 x 5kg Superflex Membrane + 25kg Rubber Granules

Repair: 1 x 5kg Superflex Membrane + 5kg Rubber Granules

| | Thickness | Weight | QR Cost |
|------------|--------------------------|--------|---------|
| Internal | 12 - 15mm | 50kg | £157.00 |
| External | 12 - 15mm | 45kg | £140.00 |
| Repair Kit | 0.4m ² @ 15mm | 10kg | £52.00 |

Q/Seal P1 may be required as primer for dusty porous surfaces



WETPOUR REPAIR KITS

Ready to mix kits for repairing Wetpour surfaces in Playgrounds. Further colours available upon request.

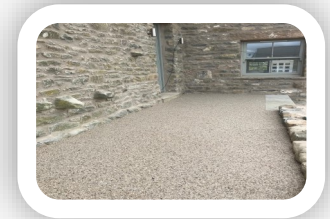
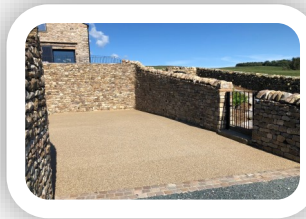
| Size/Colour | Coverage | QR Cost |
|-------------------|--------------------------|---------|
| 15kg/Black | 1m ² @ 20mm | £41.00 |
| 30kg/Black | 2m ² @ 20mm | £67.00 |
| 30kg/Red or Green | 1.5m ² @ 20mm | £110.00 |



FLEXSCREED GALAXY UVR KIT

Ready to mix and apply kit with UVR Binder & Stone Coverage Rates: 0.8m² @ 18mm & 1.2m² @ 12mm

| Size | Coverage | QR Cost |
|------|----------|---------|
| 27kg | As above | £55.00 |



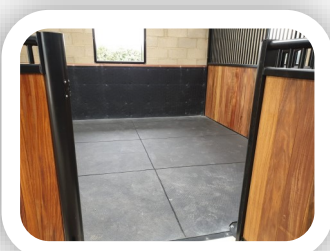
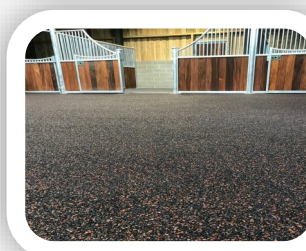
FLEXSCREED STONE BLEND KIT

Ready to mix kit for applying Flexscreed Stone Blend.

Kit Consists of:

- 1 x 1kg Flexscreed Primer
- 1 x 10kg Flexscreed HT Binder
- 1 x 25kg Recycled 1-4mm Black EPDM Rubber Granules
- 1 x 25kg Coloured Stone

| Size | Coverage | QR Cost |
|------|------------------------|---------|
| 61kg | 4m ² @ 20mm | £146.00 |



STABLE MAT BONDED & SEALED KIT

Kit for 12ft x 12ft Stable Comprises of:

- 6 x 18mm 4Mpa 6ft x 4ft Supermats
- 1 x 15kg Superflex Membrane Mat Adhesive
- 6 x 600ml Q/Flex Black Joint Sealant
- 1 x 1.2m Triangular PVC Doorway Strip

| Size | Coverage | QR Cost |
|-------|---------------------|---------|
| 245kg | 1 No 12'x12' Stable | £420.00 |

AGGREGATES, RUBBER GRANULES & STONE

ANCILLARIES

BAUXITE AGGREGATE

Guyanese or Chinese Bauxite for scattering over Grip HD.

| Size | Coverage | QR Cost |
|------|------------------------|---------|
| 25kg | Approx 4m ² | £31.00 |

RUBBER GRANULE BAGS

For use with our resin binders in the Flexscreed systems.

| Colour | Weight | QR Cost |
|---------------------|--------|---------|
| SBR Black | 25kg | £11.00 |
| Recycled EPDM Black | 25kg | £19.00 |
| Red | 25kg | £58.00 |
| May Green | 25kg | £62.00 |
| Reseda Green | 25kg | £65.00 |
| Rainbow Green | 25kg | £64.00 |
| Light Grey | 25kg | £66.00 |
| Mid Grey | 25kg | £65.00 |
| Slate (Dark) Grey | 25kg | £66.00 |
| Sky Blue | 25kg | £62.00 |
| Dark Blue | 25kg | £62.00 |
| Earth Blend | 25kg | £66.00 |

Further colours available upon request.

FLEXSCREED GALAXY STONE & SAND

Dry coloured stone to mix with Flexscreed Galaxy Binder.

| Stone Size | Weight | QR Cost |
|------------|--------|---------|
| 1-3mm | 25kg | £11.00 |
| 2-5mm | 25kg | £11.00 |
| C52 Sand | 6.25kg | £2.50 |

PLASTORIT

Fine aggregate for adding to resin coatings for grip finish.

| Size | Coverage | QR Cost |
|------|----------|---------|
| 1kg | N/A | £9.00 |

| Coating Application | QR Cost |
|------------------------|---------|
| 9" Roller Tray | £5.00 |
| 15" Roller Tray | £8.00 |
| 9" Roller Cage | £5.00 |
| 12" Roller Cage | £7.50 |
| Extender Pole (Red) 2m | £9.00 |
| 9" Roller Sleeve | £4.00 |
| 12" Roller Sleeve | £6.00 |
| 2" Brush | £2.00 |
| 4" Brush | £5.00 |
| 50mm Masking Tape Roll | £3.00 |

| Application Tools | QR Cost |
|--------------------------------------------------|---------|
| Barrel Gun For Application of Q/Flex Sausages | £35.00 |
| 9" Spiked Roller For use with Q/Level | £39.00 |
| Rubber Groover 240v | £350.00 |
| Grooving Blades - Pack of 20 | £9.50 |

| Fixings per 100 | QR Cost |
|------------------------------------------------------------------------|---------|
| Heavy Duty Fixings & Washers For fixing Rubber Mats | £42.00 |
| Hammer Fixings Standard 6/50 For fitting Eva Wall Mats (20 per mat) | £16.00 |
| Hammer Fixings Stainless 6/60 Non Rusting | £30.00 |
| Nylon M6 Washers For fitting EVA Wall Mats (20 per mat) | £12.00 |
| 150mm PVC Peg for Fixing Down Hollow Mats | £10.00 |
| Plastic Ties for Connecting Hollow Mats | £4.00 |



QUATTRO[®]

The Rubber & Resin Specialists

DELIVERY OF MATERIALS

Materials will be dispatched by our haulier on pallets or by courier if smaller orders.

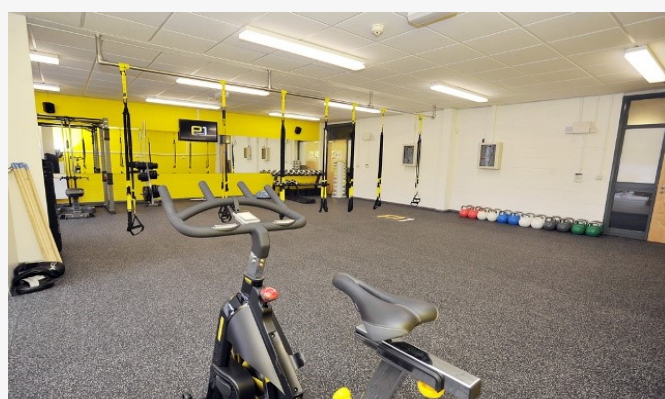
Delivery charges vary depending on quantity and location.

An average single pallet charge is £45.00 + vat and a double pallet £65.00 + vat

Means to offload the materials will be required

Please Note: Tail Lift Deliveries of Double Pallets will cost £25 extra each.

Please ring or email us for exact delivery charges if unsure.



If you can't find the product you require in this price list

Please contact us

Data Sheets available for all products on request

Quattro Products Limited, Milestone House Ind Est, Penrith, Cumbria, CA11 9NQ

Tel: 01768864977 Email: enq@quattorubberandresin.co.uk Web: www.quattorubberandresin.co.uk